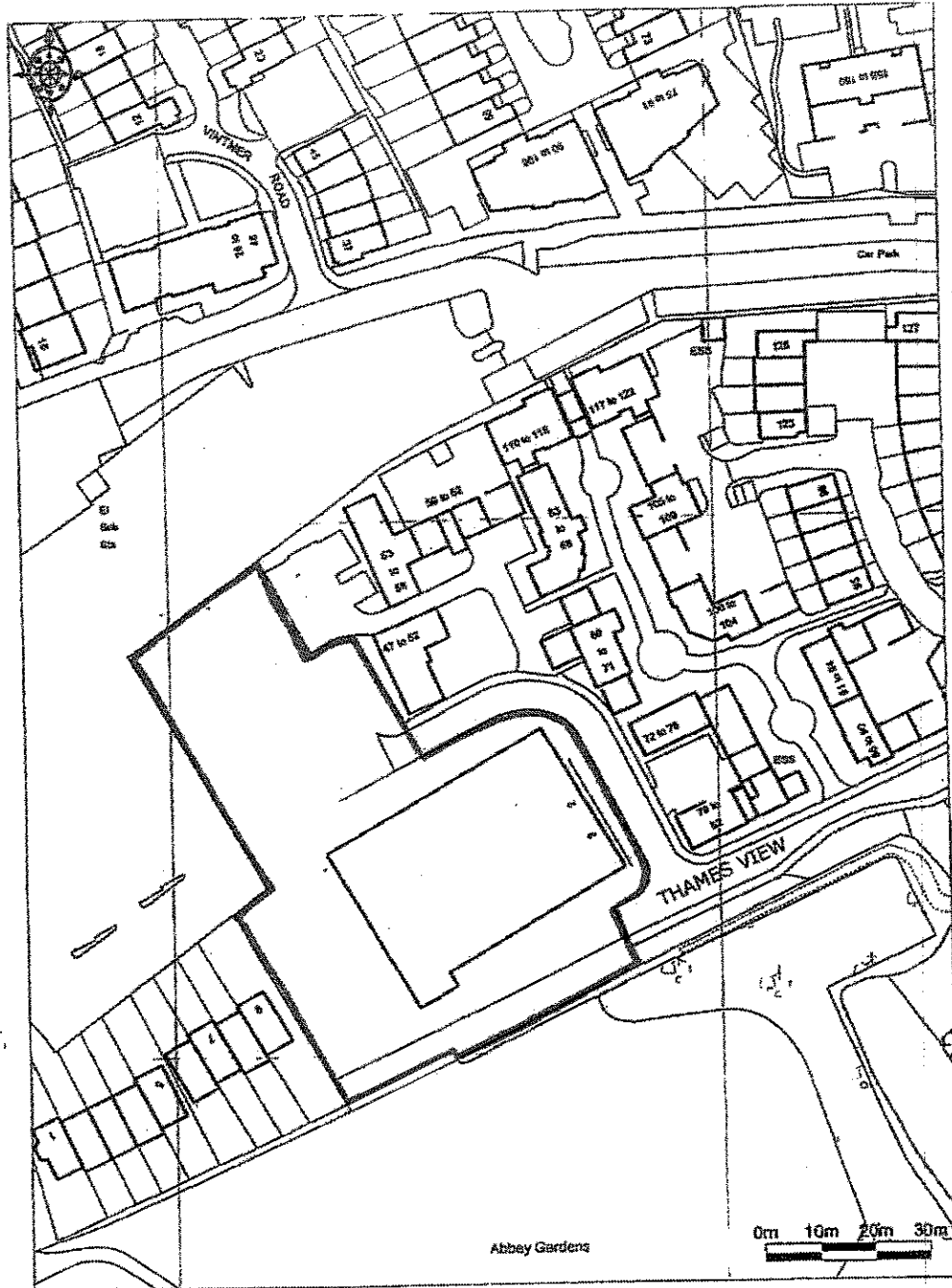


P13/V 0009/A Appendix 1 1 of 1
Land at Thames View



Client:
Markergold Ltd

Project:
River View, Abingdon

Drawing Title:
Site Location Plan

Scale:
1:1250

Drawn by:
Checked by:
Date:
Sheet No.: 99

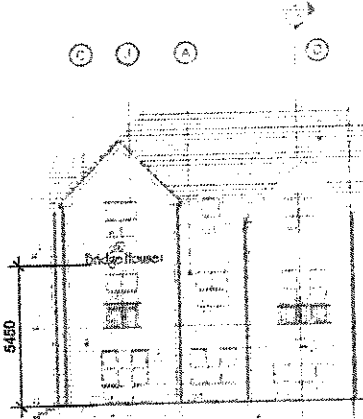
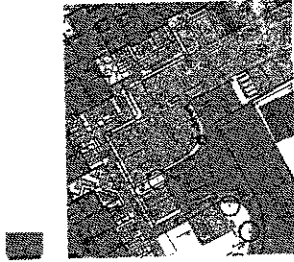
DWA ARCHITECTS



DWA Architects Ltd
20 St Thomas Street
Oxford OX1 2JF
Telephone: 01865 241400
Email: info@dwa.co.uk
DWA Architects is a limited liability partnership
registered in England No. 02721147

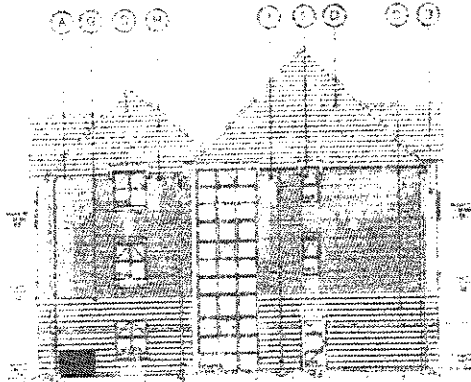


NOTE: NOT TO SCALE ALL DIMENSIONS ARE APPROXIMATE
 SITE SURVEY REQUIRED



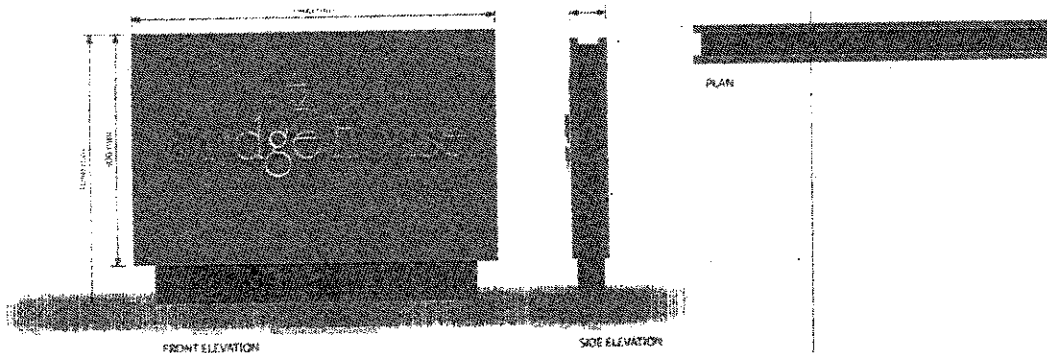
SIGN A, ENTRANCE
 METHOD - Aluminium sign powder coated in Green RAL 6013 and Grey RAL 7035. Sign to match the
 building's colour palette. Sign to be mounted on the wall. Sign to be illuminated with LED lighting.
 Illuminated with LED lighting.

SIGN B, NORTH ELEVATION
 Bridge House's external signage will consist of wall, 100% and 100% RAL 6013. Signage will be illuminated with LED lighting.
 ALL NON ILLUMINATED



SIGN C, EAST ELEVATION
 METHOD - Aluminium sign powder coated in Green RAL 6013 and Grey RAL 7035. Sign to match the
 building's colour palette. Sign to be mounted on the wall. Sign to be illuminated with LED lighting.
 Illuminated with LED lighting.





MONOLITH_SIGNS_A+C

METHOD: Aluminium sign powder coated in Green PMS 5575 and Grey PMS Cool Grey 10 to match the corporate colour palette. With brushed stainless steel 'Bridge House' text spaced via stud fixings with 'LXXV' Bar fix directly mounted to sign. Illuminated via ground mounted lighting.



WALL MOUNTED_SIGN B

'Bridge House' Brushed stainless steel 40mm built up spaced of wall. 'LXXV' and rules Brushed stainless steel 20mm built up spaced of wall. NOT ILLUMINATED.